



This month

On 16th October we have a brief Ordinary General Meeting to discuss and vote on next year's subscriptions. Following this we have a **club night**, led by Gordon Cookson, having gained inspiration from his recent visit to the AWGB biennial seminar, on the subject of design - "What do you like about a piece of turning?" "How would you improve it?" . There will be pieces of turning to review and discuss. Don't forget to bring in your pieces for the SAW show - see page 2

RAFFLE...

As usual there will be a good range of raffle prizes, always excellent value for the price of £1 per ticket.

SHORT REVIEW...

In September Mark Raby demonstrated finishing and colouring which had something new for everyone. He believes that many beautifully turned pieces on which a great deal of time and effort have been expended can be spoiled by ignoring the finishing process. He started with talking about **sanding** (never jump more than 100 grit), followed by **Webrax** type abrasives (4 grades green, red, grey and white). Mark suggested we should only use application safety cloth to apply any finish, **not** kitchen roll, as this is absorbent and will apply less and absorb more. Mark spoke about and demonstrated the following:

A range of sealers and finishes were discussed - **Shellac, Cellulose and Acrylic sanding sealers**. Shellac should not be used under acrylic or melamine top coats. Do not thin Cellulose by more than 20%. Mark uses grey webrax for denibbing in between coats of sealer and white to finish off before applying a top coat. **Friction Polish** should be applied in stages, little and often at around 1000 rpm.

Melamine lacquer should not be shaken as the bubbles created will affect the finish. It dries quickly but continues to cure for 12-14 days to create a hard water-resistant finish.

Carnauba wax should be applied sparingly as too much produces rings that are impossible to remove without re-sanding. It should never be applied on bare wood.

An item of great interest was a finish called **Treatex hardwax oil** which produces a completely waterproof finish on wood, Mark had a variety of items containing coca cola and water to prove this.

Cutting Waxes contain an abrasive and can be used to remove light scratches plus denibbing and giving a finish. Wax or acrylic lacquer can be used on top.

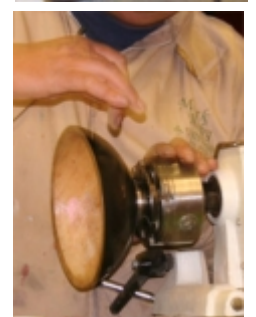
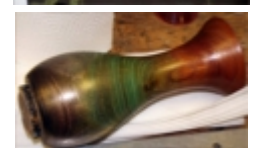
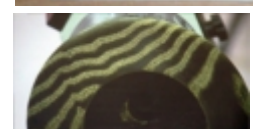
We then moved on to colouring wood. Mark demonstrated the use of **gilt cream**, mentioning that gloves should always be worn when applying it.

He then talked about **spirit stains**, which are fast drying and have good UV resistance. They are applied to bare wood and the slower the lathe speed the deeper the stain. He used a range of colours, starting at the bottom of a vase and feathering one colour into another. He finished it with a coat of yellow over the whole project applied at a higher speed. On top of this Mark applied a coat of a pale gold metallic spirit stain (well shaken), which gives a metallic hint to the piece.

Spirit stains must be sealed with cellulose or acrylic, not shellac. If the sealer is wiped on it will remove some of the colour, so he recommended using spray sealers, turning the lathe by hand, having covered the bed to protect it from the spray. The work should then be denibbed and any top coat added, Acrylic gloss or satin works well, followed by a burnishing cream, which is a mild abrasive and has the effect of flattening the surface to produce a higher lustre.

The last part of the evening was taken up with a demonstration of the use of **Jo Sonja iridescent colours**. They need to be applied over a dark background, ebonising lacquer works well here. Mark used his fingers to apply the colours as well as a brush and pressing a feather in to create a pattern. He mixed various colours through the work, having initially decanted some onto a dark card. A top coat of acrylic gloss, satin or matt spray should be used over the colours. Mark had an acrylic lacquer called Pro XL, used in the car industry which is a high volume low pressure spray so only one coat is required. The last piece was one which had an impressive marbling effect created by applying a 2nd coat of ebonising lacquer over the colours and then sanding it back.

Mark's website is www.markrabywoodfinishing.co.uk, where you can buy and see demonstrations of the above products and more. A considerably more detailed version of this review can be found on our website under **Information/Reviews**.

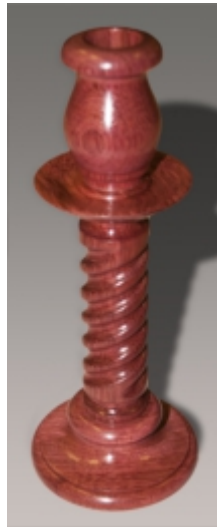


We look forward to seeing you all on Wednesday 16th October

ON THE TABLE...



Chris Taylor brought back his lignum vitae bowl, originally turned in February to show how much the wood darkens over a 7 month period



Chris Taylor continuing his 'colour' theme with this impressive African Purpleheart candlestick



Bill Collins - Allocasuarina Bowl (recycled wood salvaged from skip)



Bill Collins Yew - more recycling from a tree in his own garden



Chris turned this baby's rattle but is unsure from what wood it is made



David Buskell - Laburnum Vase with stainless steel insert to hold water from www.smoothturning.com



John Abrahams 10" cherry bowl



Roger Poulton Sapele salt box with swivel hinge lid and magnetic catch



Richard Crook 2 acrylic pen and pencil sets

DON'T FORGET

The Surrey Association of Woodturners are holding their annual Autumn show at Mytchett on 27th October (more details page 3). They have asked Cheam Woodturners if we would like to have a table displaying some of our creations and to do this we need a minimum of 10 pieces, so can you please bring your submissions in to the October meeting

JIMMY CLEWES MASTERCLASS

There will be a special edition of the e-shot sent out towards the end of October to all those attending, outlining the details of the Jimmy Clewes masterclass

PROGRAMME FOR 2013...

- 16 October** Ordinary General Meeting - agenda item: Subscriptions 2014/Club night/Design discussion
- 10 November** **Sunday** Jimmy Clewes - all day masterclass
- 20 November** To be confirmed
- 18 December:** Christmas social/Frank Clarke competition - topic "Fruit"
- Beginners:** A piece of fruit
- Intermediate:** Fruit on a platter
- Advanced:** Fruit in a bowl

We look forward to seeing you all on Wednesday 16th October

October 2013

UPDATE ON THE NEW CAMERA SYSTEM



We would like to apologise for the small picture size at last month's meeting. The projector is a new one and we obviously had the set-up wrong. We have now spoken to our regular projectionist and the projector manufacturers and we will (we hope) get a full screen size picture at the next meeting.

To do this, we need to place the projector some distance away from the screen so we now have a new stand for the projector to provide a secure base for the projector. The screen and projector will be on the right hand side of the hall and any cabling will be taped down.

Our aim is eventually to have two projectors on either side of the hall to show the demonstrators but we will work on this as soon as we have got the new system sorted out.

We received quite a few offers of help to set up and take down the new kit and we have taken on board the suggestion of marking all the cables - cable markers will be available at next Club night.

The Canon camera, pan & tilt unit, monitor and splitter all have power cables plus the camera remote and HDMI connections, does mean that we do have to make it easy for volunteers to set up the system.

We have now added wheels to the camcrane tripod to allow it to track and move more easily and tidied up the cables.

We do hope that you will now be able to enjoy the HD quality picture from the Canon high definition camera, which enables us to record a demonstration and also take still shots at the same time.

The Committee

YOUR CLUB NEEDS YOU!

At our AGM each year, our committee of dedicated volunteers have to stand down. In most years, we are lucky that they offer themselves for re-election or we only have minor changes to the committee.

In January 2014, it is the intention of the current Chairman and the Secretary to stand down from their respective roles and not offer themselves for re-election. These are two key posts in the running of the Club and we are therefore looking for volunteers to fill these posts. There's no formal Job Description or People Spec to send you but if you feel you can take over either of these roles, then please speak to Jeff (Chairman) or David (Secretary) who will be pleased to give you a better idea of what is involved.

Hilary (e-shot and website) is also moving away to pastures new early 2014 so at least one person will need to replace her.

The Club needs its Committee and the Committee needs its full quota of officers to function. Please do think about volunteering for the vacancies.

Formal Nomination forms will be available from the November meeting.

The Committee



SURREY ASSOCIATION OF WOODTURNERS WOODTURNING SHOW 2013

Once again SAW are putting on their excellent Annual Show on Sunday 27th October. This year they have Stuart King and Andy Coates as their guest professional turners and will also have other demonstrations including wood colouring and piercing and trade stands. The Wood sale always produces some bargains. Open from 10.30 am to 4.00 pm, with a bar and refreshments.

Admission: £4.00

Address: Mytchett Centre, 140 Mytchett Road, Mytchett, Surrey GU16 6AA

Additional details from

www.sawoodturners.org/openday1.php

SURREY HILLS WOOD FAIR

Now in its fourth year, the Surrey Hills Wood Fair provides a fantastic day out for all the family. It is held at Birtley Estate, Birtley House, Bramley, GU5 0LB

5th and 6th October 2013, 10am – 5pm, Entrance: £7.50.

More details at

www.surreyhillswoodland.co.uk/surrey-hills-wood-fair/

QUICK TIP

We may all think we know the best way to rough down a square block of wood, but it doesn't hurt from time to time to check how someone else does it (if only to confirm you do it better!). This quick video from Stuart Batty of the AAW shows you how he goes about it.



Extracts of articles from The American Association of Woodturners Woodturning FUNDamentals website are often featured in this e-shot, with the kind permission of Kurt Hertzog (via David Buskell). The entire website is available to those who join the AAW and Woodturning FUNDamentals provides you with a wide variety of resources for basic woodturning skills together with links to other useful information.

If you want to find out more you can join here - www.woodturner.org/org/mbrship/index.htm

Submissions for next month's e-shot should be sent to Hilary by 1st November

If you have any comments, corrections, or items to add, please contact e-shot editor Hilary - hsinclair@blueyonder.co.uk

We look forward to seeing you all on Wednesday 16th October