

MARK RABY - Woodfinishing

On 18th September Mark Raby will be demonstrating a range of woodfinishing and colouring techniques. Mark will also be bringing a range of woodfinishing products for sale, including the Jo Sonja range. Mark feels that having spent a lot of time and effort on the turning and good money on the timber many turners skimp on the finishing - this demonstration will give you some ideas on how to avoid this.

RAFFLE...

The raffle prizes will be wood blanks plus a Safety Mask (in line with the club's commitment to health & safety) as shown by Derek Blake at our August meeting. As ever great value for the price of a raffle ticket at just £1.00 each.

SHORT REVIEW...

Derek's demonstration was in 2 parts - in the first half, he spoke to us about the craft of penmaking and passed round a variety of items involved in pen production.

He started by recommending wearing a full face mask and if not suggested using tinted safety glasses, the yellow is useful in the workshop as it makes it appear easier to see in low light. He also covered the exposed thread on the lathe headstock with masking tape but suggested using a thread protector when working close to the headstock.

Derek told us that 99% of his sales are from pens made of acrylic, polyester and Corian, there is a very small demand for pens made from wood. Acrylics are easy to turn and you get a high polish. Corian is made for kitchen worktops and he gets his from a friendly kitchen fitter. Although it only comes in 12mm thickness it is possible to laminate it by glueing together the shiny sides with superglue that you rub quickly in a circular motion to spread the glue evenly.

A variety of penmaking equipment was passed round for inspection, some of which he recommended including a self-centring holder for the drill press sold by Turners workshop.

He passed round a series of mandrels he had used and gave us the useful tip to buy 2 sets of bushings and spray one set of 3 with coloured paint, these are used to get the correct size when turning because the set used when sanding will be reduced in size over time.

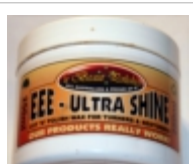
The hole is drilled by a GT drill long enough to go through a standard blank, these are engineering drills costing £19 each and should be held in a Jacobs chuck in the head stock of a lathe - NOT in a drill press as the drill will break.

We were shown various ways to create a press to push the pens together, including pieces of wood turned with a morse taper and inserted in the head and tail stock (see Beth Ireland tip on page 3).

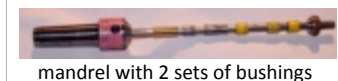
After the tea break Derek turned one of his trademark 'Pompey Pens' made from blue and white Corian blanks. He uses a Black & Decker Piranha bullet tipped drill when drilling Corian. It was interesting to see that Derek used just a large roughing gouge for turning his pens as long as it is well sharpened and used with the bevel rubbing and the tool turned in the direction of travel. He turned at 1500 rpm, taking the corners off first to prevent catches. When making a pen with a clip the top part should be straight - Derek suggested turning the lower, more bulbous part first so that if an error occurs it can be used for the top instead!

The blanks were finished with a skew, used as a scraper. The bushes were changed for the unpainted ones to sand the blanks. Derek uses Abranet mesh as it doesn't get clogged and prevents the material overheating. He gave us a tip about using a set of coloured fridge magnets (£1 from B&Q) each marked with the grit size to attach the sanding sheets to the lathe. He then follows through the grades with foam backed Rhinosoft and finished with Micro-Mesh, usually to 1200 grit. The final polish is achieved with EEE-Ultra shine wax paste - which achieves a cut and polish and then finished with burnishing cream. Assembly should be taken slowly - pressing in a bit at a time and ensuring the mechanism will retract fully, fitting the clip and matching the grain with pen retracted.

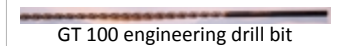
Derek finished his detailed talk by offering to give a full day in his workshop to anyone interested - you just need to take your lunch and can spend the day making pens with him - generously he does not charge for this - contact him on derek.blake57@ntlworld.com, we have uploaded his [Details of Useful websites](#) and the [supplier of the GT 100 drill](#), and see the full review at [Derek Blake Aug 2013 penmaking.pdf](#)



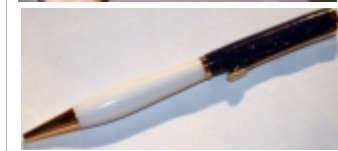
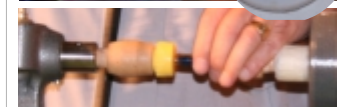
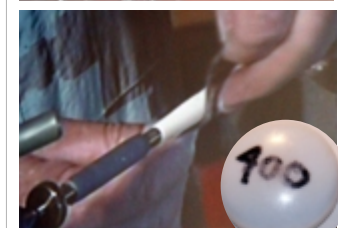
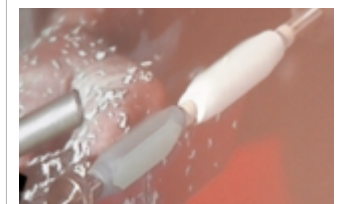
self-centring holder for drill press



mandrel with 2 sets of bushings



GT 100 engineering drill bit



We look forward to seeing you all on Wednesday 18th September

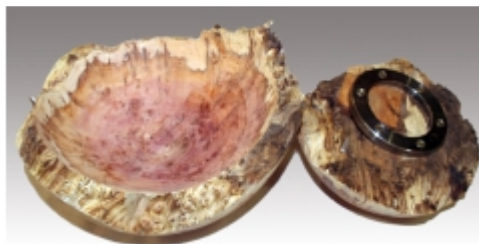
ON THE TABLE...



This bowl, made from segmented kitchen worktops, was completed by Brian Ash from a piece started by the late Colin Dunn



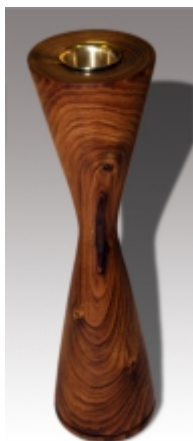
Chris Barrett made this Sycamore and African blackwood cake stand to experiment with combining two woods (very successfully)



Jeff Cordery produced this work in progress, which is from a yew burr. It is very dry and hard and took nearly 40 minutes to core out, using his bowlsaver as demonstrated last month. The beautiful pattern and colour make the effort worthwhile.



Brian Ash
Spalted Beech



Derek Dowle
Cherry(?)



Roger Poulton
Cherry Box



David Buskell
Burr Elm from Dorking
very dry!



Roger Poulton
Sapele



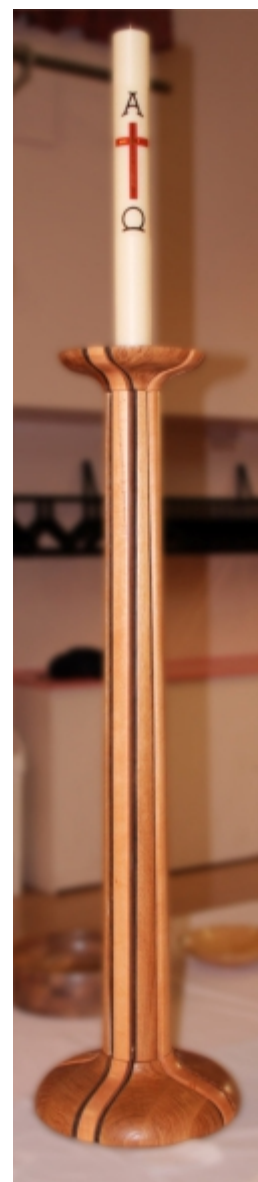
Roger Poulton
Zebrano



Bernard Sinclair
Sumac



Bernard Sinclair - Walnut



Alan Elkins produced this spectacular Beech and Oak church candle holder as a commission

JIMMY CLEWES FINAL REMINDER

Will members who have not yet booked or paid for their ticket to Jimmy Clewes Masterclass in November please ensure you pay for your ticket, or confirm other arrangements with John Fenn by **September 9th**. We will then open sales to other clubs and expect to be quickly sold out.

LOG MAKER



After the break at our August meeting Roger Marsden gave us a short and very interesting demonstration of his **logmaker**. It makes logs for burning on any open fires, stoves and chimineas and can use any scrap paper, cardboard, tea bags, leaves, twigs and, particularly useful for woodturners, woodturning shavings, sawdust, etc. Wet or dry scrap can be used, which is encased in a sheet of newspaper. You can see a video demonstration on the website - www.logmaker.org.uk (How it works). They cost £22.95+2.95 p&p.

OCTOBER MEETING

The October meeting will start with an **Ordinary General Meeting** with one agenda item - the subscription for 2014. As stated last month the Committee are recommending that we retain the current charge of £30 per year.

Following this we have a **club night**, led by Gordon Cookson, having gained inspiration from his recent visit to the AWGB biennial seminar, on the subject of design - "What do you like about a piece of turning?" "How would you improve it?" (see page 3). There will be pieces of turning to review and discuss.

PROGRAMME FOR 2013...

- 18 September** Mark Raby - Woodfinishing
- 16 October** Ordinary General Meeting - agenda item: Subscriptions 2014/Club night/Design discussion
- 10 November** **Sunday** Jimmy Clewes - all day masterclass
- 20 November** To be confirmed
- 18 December:** Christmas social/Frank Clarke competition - topic "Fruit"
Beginners: A piece of fruit
Intermediate: Fruit on a platter
Advanced: Fruit in a bowl

We look forward to seeing you all on Wednesday 18th September

September 2013

NEWS FROM THE AWGB SEMINAR, LOUGHBOROUGH

*Notes on How to improve your work by
Gordon Cookson*

The AWGB held their biennial seminar at Loughborough University, which Gordon Cookson attended and following his visit has provided us with 2 excellent articles. The longer report on the event can be **viewed on our website** (an extract may be included in a future e-shot) and below are some interesting and useful notes on how to improve your work:

“Many pieces in the Instant Gallery were 95% there but needed that extra effort to be chosen to represent the AWGB. The following are some of the issues:

- Remove blemishes in the finish
- Position the centre of an end grain bowl centrally on the pith of the log
- Ensure good colour matching of different woods in the same finished piece
- The base of the piece should look the right size and be fit for purpose
- Any stand should support the piece but not compete or equal it
- Remove or blend chucking marks for competition entries
- Details of the turner's name, wood type, date of making were preferred to be by pyrography rather a branded stamp
- A designed piece can often beat a piece by a better turner
- Even thickness prevents splitting when turning green wood (Pascal Oudet)
- Is the piece right for the chosen market
- Is the wood suitable for the finished piece?
 - Pascal Oudet only used oak for his lace like pieces because its structure responds best when sandblasting
 - Jerome Blanc mainly used Ash for his textured and coloured pieces as it provides a good starting canvas to work on
 - Curt Theobald uses quarter sawn timber for stability in the bases of his segmented vessels and usually wengé, ebony or mesquite. He avoids oily timbers because they don't glue easily
- Having machines at the right working height for you and positioned for efficiency helps to prevent tiredness and less likelihood of causing mistakes or accidents.”



QUICK TIP

Once again the American Association of Woodturners provide us with more useful tips. A couple of months ago we featured a video by Beth



Ireland about how to use the calipers to size a piece, and following on from that, she is **making a morse taper jig with ideas of how to use it** (Derek Blake was using something similar in his penmaking demonstration). Extracts of articles from The American Association of Woodturners Woodturning FUNdamentals website are often featured in this e-shot, with the kind permission of Kurt Hertzog (via David Buskell). The entire website is available to those who join the AAW and Woodturning FUNdamentals provides you with a wide variety of resources for basic woodturning skills together with links to other useful information.

If you want to find out more you can join here - www.woodturner.org/org/mbrship/index.htm

FOR SALE

Axminster M950 variable speed lathe including stand, new Clubman K10 chuck with 3 jaw sets and indexing ring in flight case.

The headstock swivels and moves along the length of the bed so makes this a versatile lathe. Can be tried out before purchase if required.

£110 the lot. Contact **David Buskell 020 8657 5565**

Record RDX600 dust extractor

Axminster MTM air filter system - contact **Brian Ash, 020 8642 8108**

CLUB SHOP NEWS (A Members Service)

Don't forget that we also have a stock of **Rustins Danish Oil 500ml**, selling at £5.00 (half that of Axminster) and **WebRax** - particularly good for getting a burnished finish after sanding.

It's well worth trying our shop first before going out and spending money needlessly elsewhere!

If anyone hears of events that would be of interest to club members or has any other information/articles to include in the e-shot please let me know - Hilary.

Submissions for next month's e-shot should be sent to **Hilary** by 27th September

If you have any comments, corrections, or items to add, please contact e-shot editor Hilary - hsinclair@blueyonder.co.uk

We look forward to seeing you all on Wednesday 18th September